

CE IVD

GENES2[®]
DX



POC RT-PCR

S o l u t i o n s

RAPi-

RAPi-X16

POC RAPID RT-PCR SYSTEM

Revolutionary Point of Care Testing Solution which does not require any special lab environment or additional equipment



- Highly Accurate Fluorescent probes based detection method which supports One-step PCR Method for different applications
- Delivers Result Interpretation as Positive/ Negative along with Ct values



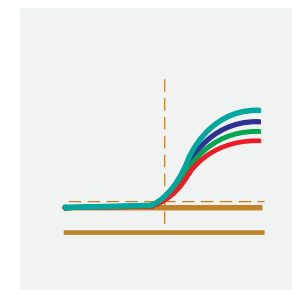
From Direct Samples to Results in **30-45 Minutes**



Pipette Free Operation
Eliminating the need of Technically Skilled Person



High Sensitivity (99%),
Specificity and Accuracy in results



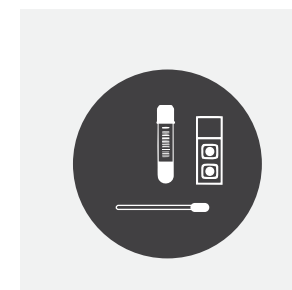
Four Targets Analysis
Allowing detection of multiple genes/ infections simultaneously



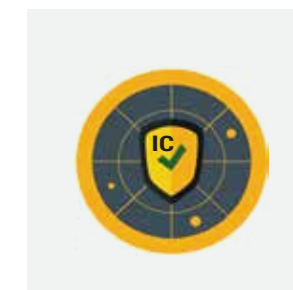
Lyophilized Format
Making the kit stable at Room Temperature for upto 12 months

Name	CT Value	Result
Sample 2	31.2	Positive
	29.8	
	30.6	

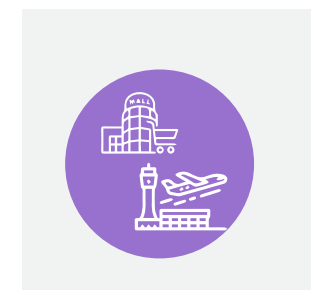
AI Driven Solution
Automated analysis, Interpretation & Reporting



Extensively Validated on wide variety of Clinical Samples



Parallel detection of Target with **Endogenous Internal Control**



Ideal for **Testing at Public Places** with confined space

Standalone
Operation with Direct Connectivity to Printer, Barcode Scanner & LIS



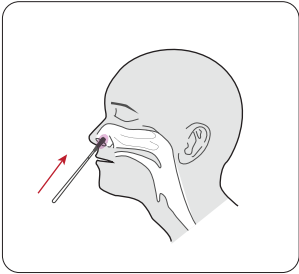
Thermal Printer



Barcode Reader

RAPI-Q HT SPECIFICATIONS			
Size	300(L)x267(W)x198(H) mm	Transportation & Storage Temperature	-20~55°C
Weight	11KG	Sample Capacity	32
Power Supply	220V	Applicable consumables	Dedicated Consumables
Communication Interface	USB 2.0	Temperature Range	4~100°C
Operating Environment Temperature	18~35°C	Temperature Accuracy	± 0.25°C
Sensitivity	1 Copy	Maximum Ramp Rate	8°C/s
Instrument Noise Level	<65dB	System Startup time	<30 seconds
Excitation	Long Life LED	Excitation Wavelength:	F1: 470nm, F2: 523nm, F3: 571nm, F4: 628nm
Detection	High sensitivity photoelectric Detector	Emission Wavelength	F1: 525nm, F2: 571nm, F3: 612nm, F4: 692nm

- 7 inch high definition touch screen and embedded Win10 Operating System
 - Unique hot lid lock design
 - One touch to open the lid
 - Power Failure, Fault Protection and Alarm Function
 - Factory Calibrated Dyes: F1: FAM, F2: HEX, F3: ROX, F4: CY5
-
- Preset Programm settings for multiple RT-PCR assays and fluorescent detection
 - Data Analysis Function: Qualitative, Quantitative, Melting curve analysis
 - Data Export Formats: excel, csv, txt
 - Software Upgradation (remotely)
 - Individual sample report
 - Complete batch report



Sample Collection
(Oropharyngeal/
nasopharyngeal swab)

POC RAPID RT-PCR SYSTEM

APPLICATIONS

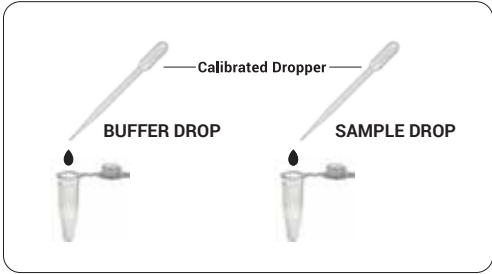
- Intended solution for rapid detection at Health clinics, Blood Banks, Research laboratory, Hospitals & Airports
- Clinical medical testing & POC emergency detection
- Ideal for on site detection of Tuberculosis, HPV, 3H (HIV, HCV & HBV), Tropical Fever & STIs
- Compatible for 50+ lyophilized room temperature stable disease detection kits.
- Provides Software driven automated analysis, interpretation and reports



4 Channels & dual block 16-Well Design, can run two different programs independetly

NUCLEIC ACID EXTRACTION FREE PROTOCOL

Easy Steps to Result



Reaction Set-up



Instrument Run



Automated Report

Commercial Name	Cat No.
Rapi-Q HT POC Rapid RT PCR System	IG2M5001HT



FEATURES :

- Four channel- Eight well Block Design
- Capable of working with Car Battery/ Lithium Battery- especially suitable for quick inspection & field inspections
- Direct connectivity with Portable handheld devices
- Constant Current Circuit, High Temperature control Accuracy
- Powerful Software Analysis Function- can perform quantitative analysis, melting curve analysis, etc.
- Adopting Side Scan Technology- the detection distance is short and the fluorescence collection signal is stable.
- Protection Functions- Over current, Over- temperature, power-off data self-recovery, etc.
- Environment Friendly- Holds advantage of energy saving, environmental protection & long service life.



For testing of 1-8 samples



Compatible with 50+ detection assays



Commercial Name	Cat No.
Rapi-Q Real Time PCR System	IG2M5001

Point-of-Care RT-PCR SYSTEM



Light weight and Compact (~3Kg)

Can be operated with Car battery/Lithium battery

Tablet for display & operations

RAPI-Q SPECIFICATIONS	
Sample Capacity	8×0.2ml (8 well)
Consumable	Clear 0.2 ml PCR tube /8-tube strips
Reaction Volume	15-100µl
Temperature Range	0-100°C (Resolution:0.1°C)
MAX. Ramp Rate	7°C/s
Temperature fluctuation	±0.1°C
Uniformity, Accuracy	±0.25°C, ±0.25°C
Hot Lid Temperature	30-110°C (Adjustable, default 105°C)
Excitation wavelength	460-628nm
Emission wavelength	F1: 520-540nm, F2: 540-580nm, F3: 571-612nm, F4: 628-692nm
Factory Calibrated Dyes	F1: FAM/SYBR Green I, F2: HEX/VIC/JOE/TET, F3: ROX, F4: CY5
Excitation	Long life LED
Detection	High sensitivity photoelectric detector
Dynamic Range	1-10 ¹⁰ Copies
Sensitivity	1 copy
Date Export Formats	Report can be printed (optional USB thermal printer)
Printing	excel, cvs, txt
Dimension, Net Weight	197(L)×159(W)×132(H), 3KG
Voltage, Power	220VAC, 50HZ, DC15V 225W

RAPi-X16

Fast & Automated Nucleic Acid Extraction SYSTEM

Genes2Me Rapi-X16 nucleic acid extraction system features high sensitivity with precise mechanical movement. The system ensures homogenous suspension and distribution of magnetic beads, leading to higher DNA/RNA yields.

FEATURES :

- Suitable for Extraction & Purification of various clinical samples
- Complete range of kit reagents for faster & efficient extraction and purification of DNA, RNA and Total nucleic acids
- Temperature uniformity & accurate controls
- High Recovery Rate of Magnetic Beads >98%
- User friendly Interphase for real time display of running programs
- HEPA filter and UV Light for decontamination
- Powerful application to efficiently meet different reagent requirements



Commercial Name	Cat No.
Rapi-X16 Automated Nucleic Acid Extraction System	G2MI80002



**Magnetic Bead based
Extraction System**

**Faster End Products with
Short Processing Time**

**Easy to Use, Standalone
independent operation**

**Pre-filled Ready to use
reagents for
multiple sample types**

- Sample Types: Blood, Plasma, Serum, Nasopharyngeal & Oropharyngeal Swabs, Vaginal & Cervical swabs, Saliva, Sputum, Urine, Fresh tissue and other body fluids
- Can process 8/16 samples per run
- Extraction time ~ 15 minutes
- Working volume: 10-100ul
- Sample Elution volume: 50-100ul

oneXtract

One for all **Nucleic Acid Extraction Kit**

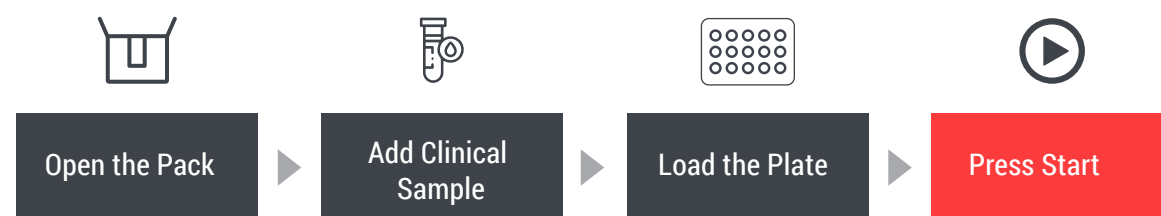
Genes2Me "One for All" total Nucleic Acid Extraction solution is an automation friendly kit that enables processing of varied clinical samples for isolation of pure & intact nucleic acids.

Sample Types

- Whole Blood
- Saliva
- Nasopharyngeal/ Oropharyngeal Swabs
- Vaginal & Cervical swabs,
- Plasma/ Serum
- Urine
- Fresh Tissue
- Other Body Fluids



Easy to Process Steps



Cat No.	Pack Size
G2M211921-NAE(PF) MagNXT Tissue & Body Fluids (OneXtract)	96/192/480 Preps



One Unique Solution for total Nucleic Acid Extraction



Ready to use Prefilled Plate Format



Room Temperature Optimized Protocols



High Quality Purified Nucleic Acid (DNA/ RNA) suitable for downstream applications



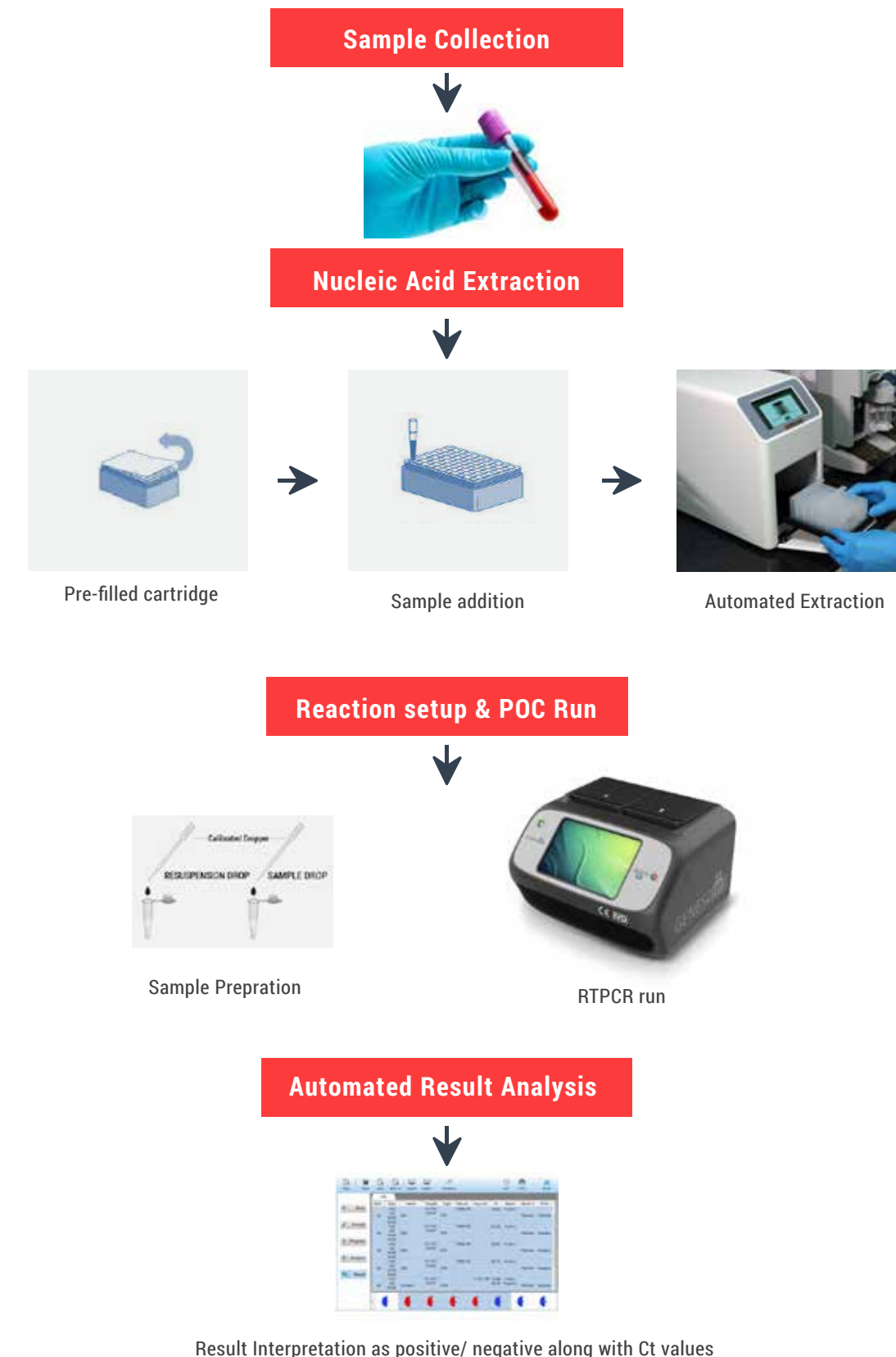
Flexible to Multiple Samples Types



Processing Time ~15 minutes

One stop solution for detection of infectious diseases and oncology assays

MTB, HPV, HBV, HCV, HIV, STIs



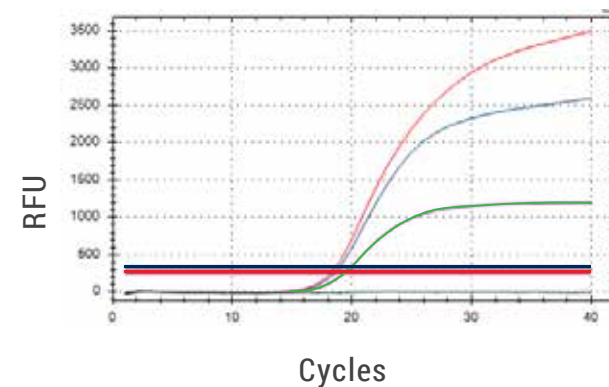
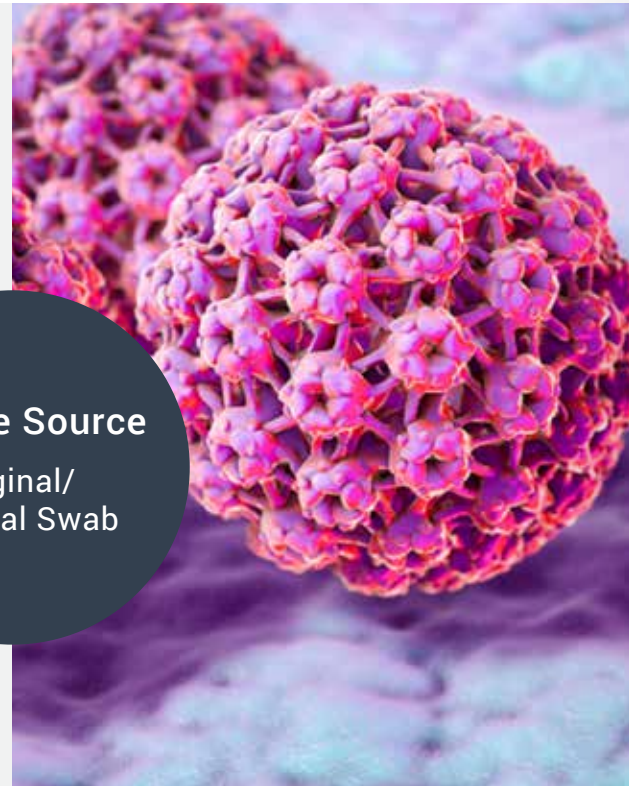
HPV Detection Solutions

Human papillomavirus infection (HPV infection) is caused by a DNA virus from the Papillomaviridae family leading to major health problems, including genital warts and cancers.

HPV-Q Real Time PCR Kit

- Allows differential identification of 14 High- risk HPV genotypes: HPV 16, 18, 31, 33, 35, 39, 45, 51, 52, 56, 58, 59, 66, 68
- Differential detection:
 - HPV 16 (Hex)
 - HPV 18 (Rox)
 - Rest of HPV genotypes (FAM)
 - Endogenous control (Cy5)

Sample Source
Vaginal/
Cervical Swab



Amplification patterns obtained with the multiplex assay on plasmid DNA (10^5 copies of plasmid/ μ L). The curves were generated by amplification of target specific positive control DNA of pooled plasmids for HPV16, HPV18 and other 12 HR- HPV genotypes.

HPV-Q Comprehensive Real Time PCR Kit (28 Genotypes)

- Comprehensive Real Time PCR in vitro diagnostic test for the detection of 28 HPV genotype including high risk HPV and low risk HPV genotypes in DNA extracted from clinical samples
- Differential identification of HPV16 and HPV18 genotype
- Qualitative detection of
 - 12 High Risk genotypes including HPV 31, 33, 35, 39, 45, 51, 52, 56, 58, 59, 66, 68
 - 14 Medium-Low risk genotypes including HPV 6, 11, 83, 54, 26, 81, 61, 44, 40, 43, 42, 82, 53, 73

TB Detection Solutions

Complete testing solution for Tuberculosis

TBfind

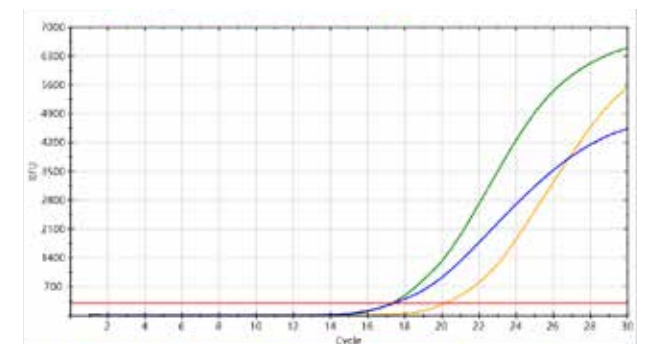
TB-Q Comprehensive Real Time PCR Kit

- Allows Simultaneous detection of MTB & MDRTB (Multidrug- resistant tuberculosis)
- Targets Covered: MPt64, rpoB, katG, inhA genes
- 16 mutations covered for two first line drugs ie. isoniazid (INH) & rifampicin (RIF) resistant/sensitive tuberculosis

TBdtest

MTC-Q Real Time PCR Kit

- Detection of Mycobacterium tuberculosis infection in clinical samples
- Targets Covered: IS6110, MPt64 genes



Amplification plot of Tb positive sample using RTPCR assay on POC device

MTB-NTM Multiplex Real Time PCR Kit

- Detects Non-tuberculosis mycobacterium infections causing lung diseases/ non causative agents of TB.
- Targets Covered: multiple NTM genotypes including M. abscessus; M. avium; M. fortuitum; M. kansasii; M. intracellulare; M. massiliense; M. chimaera
- Accurate Detection and Differentiation of tuberculosis with NTM
- Targets Covered: NTM specific - HSP65 gene
MTB specific - MPt64 gene

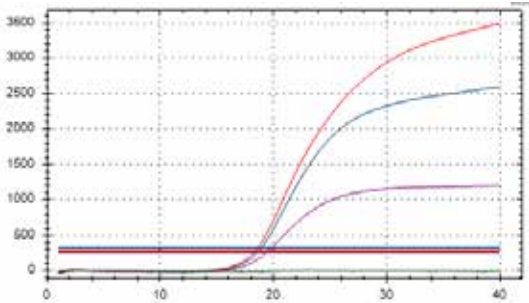
3H(HIV, HCV, HBV) Detection Solutions

Multiplex qualitative assay for simultaneous detection of Hepatitis C virus, Hepatitis B virus & Human Immunodeficiency virus in clinical samples

3Hdtect - Q

Multiplex Real Time PCR Kit

Individual target specific primers and probes have been designed for multiple virus detection in a single reaction through separate fluorescent channels



Amplification plot of HPV positive control using one step RTPCR assay on POC device

One step RTPCR kit with ready to use reagents specific for multiple targets based on Taqman chemistry.

Gene targets covered:

HCV specific: Poly gene
HBV specific: CR gene
HIV specific: pol, gag genes

One tube assay for differentiation & identification of HCV, HBV & HIV



Sample Source
Serum/ plasma



High Sensitivity and Specificity



Shelf Life: 12 months



Quick Turn Around Time

STI Detection Solutions

STI-Q Comprehensive Real Time PCR Kit is a multiplexed real-time PCR kit for the detection of major Sexually Transmitted Infections (STIs) causative pathogens from clinical samples.

STI-Q Comprehensive Real Time PCR Kit

Comprehensive Multiplex Real Time PCR Kit

Aims to qualitatively detects & differentiates causative organisms for Sexually Transmitted Infections in clinical samples along with parallel detection of Internal control

Pathogens Covered

- Mycoplasma genitalium
- Mycoplasma hominis
- Neisseria gonorrhoeae
- Trichomonas vaginalis
- Ureaplasma parvum
- Ureaplasma urealyticum
- Herpes Simplex Virus -1
- Herpes Simplex Virus -2
- Treponema pallidum (Syphilis)
- Candida albicans
- Toxoplasma gondii
- Haemophilus ducreyi
- Chlamydia trachomatis*

STI7-Q Real Time PCR Kit

Multiplex Real Time PCR Kit

Qualitative detection & differentiation of seven major sexually transmitted infections (STIs) causative pathogens in clinical samples along with parallel detection of Internal control

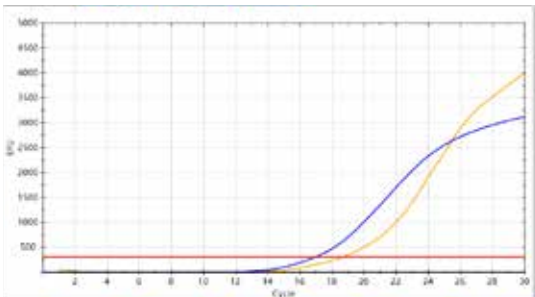
Pathogens Covered

- Mycoplasma genitalium
- Mycoplasma hominis
- Neisseria gonorrhoeae
- Trichomonas vaginalis
- Ureaplasma parvum
- Ureaplasma urealyticum
- Herpes Simplex Virus-1
- Herpes Simplex Virus-2
- Chlamydia trachomatis*



BCR-ABL-Q Real Time PCR Kit

BCR-ABL-Q Real Time PCR Kit is a detection of BCR-ABL breakpoint gene fusion transcripts in total RNA isolate from clinical samples i.e. bone marrow & peripheral blood samples.



Amplification profile of BCR-ABL positive sample (FAM channel) along with Internal Control (ABL1) (Texas Red channel) on POC device

Breakpoint Gene Fusion Transcripts

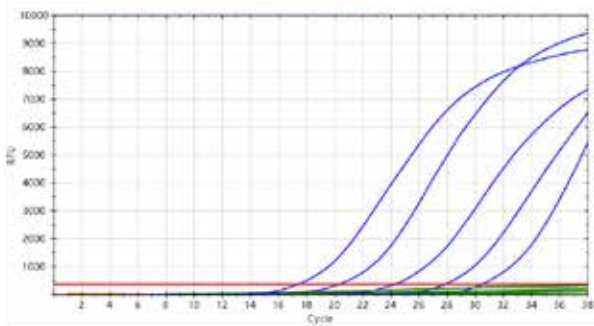
- Major-BCR [M-p210-[e14a2 & e13a2]
- Minor-BCR (M-p190-[e1a2])
- Micro-BCR (M-p230-[e19a2])
- BCR-ABL Fusion Gene [chromosome 9 and chromosome 22 (Translocation)]

PML-RARA-Q Real Time PCR Kit

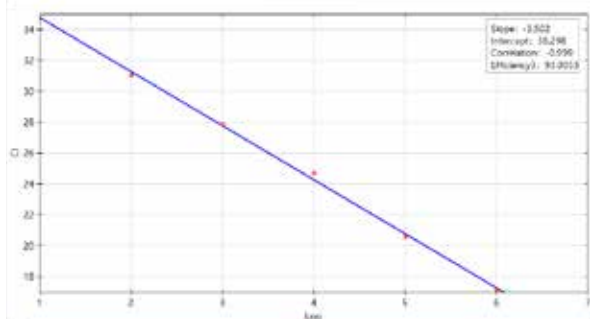
- PML-RARA-Q Real Time PCR Kit is a nucleic acid amplification assay for quantitative detection of PML-RARA t(15;17) translocation in human clinical samples
- Multiplex detection assay for identification & differentiation of Long (bcr1), Variant (bcr2) and Short (bcr3) fusion transcripts along with Internal Control

BCR-ABL Quantitative Real Time PCR Kit

BCR-ABL Quantitative Real Time PCR Kit is an in vitro diagnostic test for the Quantitative detection of major (p210), minor (p190), and micro [p230] breakpoint transcripts in BCR-ABL gene in DNA extracted from clinical samples

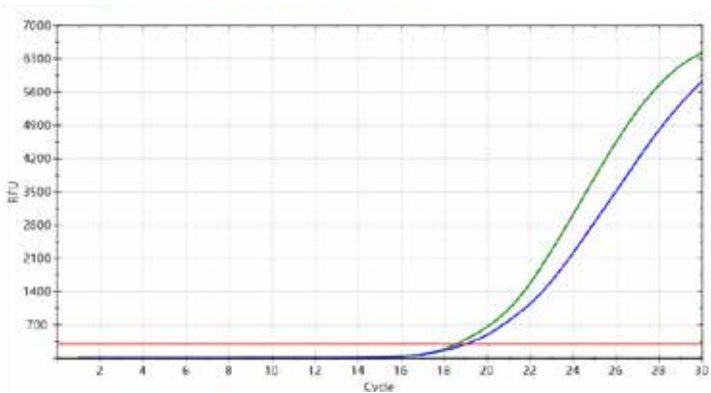


Amplification profile of BCR-ABL template (10 folds serial dilutions) quantitative standards on POC device



Standard curve based on the dilution series.

Jak2-Q Real Time PCR Kit



Amplification profile of JAK-2 positive sample (FAM channel) along with Internal Control (Cy5 channel) on POC device

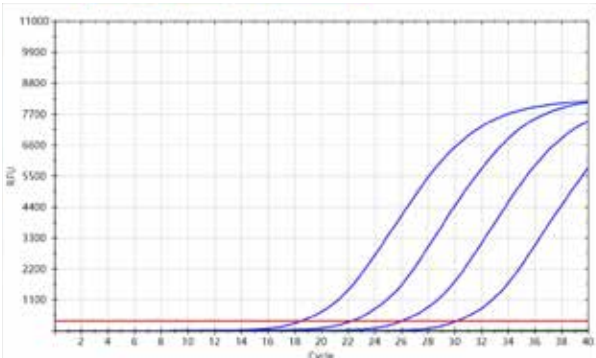
- JAK2-Q Real Time PCR Kit is an in vitro diagnostic test for the qualitative detection of mutation in JAK2 gene in DNA extracted from clinical samples
- Single tube assay, targeting sequences to detect V617F mutation ie. Point mutation 1849 (G→T) V617F in the JAK2 gene

HLA B27-Q Real Time PCR Kit

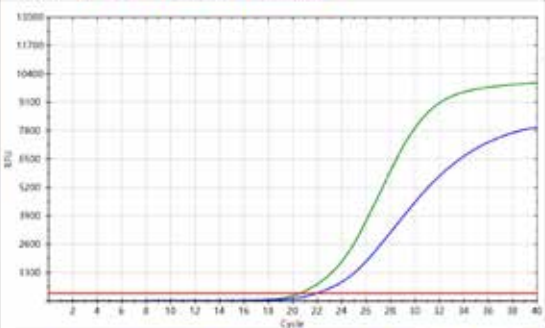
Human leukocyte antigen (HLA) B27 is majorly found in patients suffering with Ankylosing Spondylitis (AS) which is a type of arthritis that affects the spine.

Although it can occur at any age, spondylitis most often strikes men in their teens and 20s. Traditionally “AS” has been considered a disease that affect mostly men, yet in reality, it also affects many women. People who are HLA-B27 positive are also more likely to experience early onset “AS” than HLA-B27 negative individuals.

- Target : B locus in the MHC on chromosome 6
- Rapid and reliable detection of HLA- B27 (FAM channel) & Internal control (Cy5 channel)



Amplification profile of HLA B27 template (10 folds serial dilutions) quantitative standards on POC device



Amplification profile of HLA B27 positive sample (FAM channel) along with Internal Control (Cy5 channel) on POC device

Pictorial representation of Result Interpretation of HLA-B27 assay on POC device

AQ										
Well	Dyes	Name	Targets	Type	Std.con.	Copy No.	Ct	Result	Result-2	Final
A2	FAM HEX NONE	QS1	HLA B27 RnaseP	STD	1.00e+06		18.43	Positive		Positive
A3	HEX NONE FAM	QS2	HLA B27 RnaseP	STD	1.00e+05		22.23	Positive		Positive
A4	HEX NONE FAM	QS3	HLA B27 RnaseP	STD	1.00e+04		26.01	Positive		Positive
A5	HEX NONE FAM	QS4	HLA B27 RnaseP	STD	1.00e+03		30.12	Positive		Positive
A6	FAM HEX NONE	Sample 1	HLA B27 RnaseP	UNK		1.21e+05	21.94 20.76	Positive Negative	Positive	Positive

Broad Range of High Sensitivity Kits :

Oncology

PML-RARA Real Time PCR Kit
BCR-ABL Real Time PCR Kit
BCR-ABL quantitative Real Time PCR Kit
HLA-B27-Q Real Time PCR Kit
JAK-2-Q Real Time PCR Kit

G2M708821R
G2M708921R
G2M802821R
G2M801121R
G2M802621R

Mycobacterium Tuberculosis Detection

MTC-Q Real Time PCR Kit (Tbdtect)
TB Comprehensive Real Time PCR Kit (Tbfind)
MTB-NTM Multiplex Real Time PCR Kit (Tbdetect Advanced)

G2M707321R
G2M803121R
G2M707421R

Respiratory Disease Diagnostics

Influenza A/B-Q Real Time PCR Kit (EF)
B. Pertussis-Q Real Time PCR Kit (EF)
S. Pneumonia-Q Real Time PCR Kit (EF)
M. Pneumonia-Q Real Time PCR Kit (EF)
Measles-Q Real Time PCR Kit
LP-MP Multiplex Real Time PCR Kit (EF)
Adeno-Q Real Time PCR Kit (EF)
MERS-Q Real Time PCR Kit (EF)
RSV-Q Real Time PCR Kit (EF)

G2M706021R
G2M706821R
G2M706921R
G2M707721R
G2M705721R
G2M707921R
G2M707821R
G2M802121R
G2M801221R

COVID Detection

COVIDtect Multiplex RT PCR Kit for COVID-19 (EF)
Rapi-Q Multiplex Real Time PCR Kit for COVID-19
COVFlu One Step RT PCR Kit (EF)
CoVFlu-II One Step RT PCR Kit (EF)

G2M030521
G2M505121
G2M272721R
G2M709821R

Reproductive Health

Human Papilloma Virus (HPV)-Q Real Time PCR Kit
HPV-Q comprehensive Real Time PCR Kit
N. Gonorrhoeae (NG)-Q Real Time PCR Kit
T. Vaginalis (TV)-Q Real Time PCR Kit
U. Urealyticum-Q Real Time PCR Kit
M. Hominis (MH)-Q Real Time PCR Kit
Syphilis-Q Real Time PCR Kit
STI7-Q Real Time PCR Kit
STI-Q comprehensive Real Time PCR Kit
HSV-Q Real Time PCR Test Kit
Toxo-Q Real Time PCR Kit*

G2M706721R
G2M803921R
G2M706421R
G2M706621R
G2M801421R
G2M707221R
G2M705521R
G2M709121R
G2M803721R
G2M705221R
G2M709621R

Other Infectious Diseases

H. Pylori-Q Real Time PCR Kit
BK-Q Real Time PCR Kit for BK virus
EBV-Q Real Time PCR Kit
Nipah-Q Real Time PCR Kit
Rota-Q Real Time PCR Kit
VZV-Q Real Time PCR Kit
Human Parvovirus (B19)-Q Real Time PCR Kit
C. Albicans (CA)-Q Real Time PCR Kit
Rubella-Q Real Time PCR Kit*
CMV-Q Real Time PCR Kit*

G2M706321R
G2M705421R
G2M705621R
G2M705921R
G2M801621R
G2M705821R
G2M706521R
G2M708021R
G2M804023R
G2M709521R

Blood Borne Diseases

HBV-Q Real Time PCR Test Kit*
HCV-Q Real Time PCR Test Kit*
HIV-Q Real Time PCR Test Kit*
3Hdtect-Q Real Time PCR Test Kit*

G2M709221R
G2M709321R
G2M709421R
G2M804022R

Vector borne Transmission Detection

Dengue-Q Real Time PCR Kit
Malaria-Q Real Time PCR Kit
Chikungunya-Q Real Time PCR Test Kit
Zika-Q Real Time PCR kit
Y. Fever-Q Real Time PCR kit
J. Encephalitis-Q Real Time PCR kit
W. Nile-Q Real Time PCR kit
Para-Q Multiplex Real Time PCR kit
Para2-Q Multiplex Real Time PCR kit

G2M705021R
G2M706221R
G2M705321R
G2M262621R
G2M801821R
G2M802021R
G2M802321R
G2M706121R
G2M801521R

Genetic Disorders

SCA-Q Real Time PCR Kit

G2M803221R

(EF) Extraction Free Kits
* Research use only

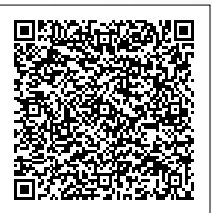
Fully Automated IVD Kits Manufacturing
Facility of 1,50,000 Sq.Ft. in Manesar, INDIA

Coming soon



Genes2Me Pvt. Ltd.

1105, 11th Floor, Tower B, SAS Tower, Medicity,
Sector - 38, Gurgaon - 122 001, Haryana, India
Tel : + 91 18001 214030 / + 91 88000 23600
E-mail : contact@genes2me.com
www.genes2me.com



All products listed in the catalogue are the products of Genes2Me Private Limited. Apart from that, all other product names, trademarks and logos wherever used in the catalogue are the property of their respective owners. For more information, visit www.genes2me.com.